

6. Research Centers at CNU

1. Research Institute of Nursing Science

Phone: +82-62-530-4939 URL: <http://crins530.jnu.ac.kr/>

The purpose of the Research Institute of Nursing Science at Chonnam National University is to promote sustainable growth of nursing discipline by systematically integrating nursing education, research, and practice associated with the academic advance of nursing science, the development and support of nursing educational programs fused and integrated with other relevant disciplines, mental health and general health promotion projects of communities, advisory services for health care policies, and research and development projects for general health care. Therefore, the Research Institute of Nursing Science focuses on the activities of reinforcement of research by multidisciplinary collaboration of the nursing faculty, clinical nurses, and other healthcare providers for community health, development and support of grant proposals for research funding from domestic and international organizations, maintenance of the accredited nursing educational program and development and support of educational services differentiated from the competition, while supporting the nurturing of nursing research manpower with global competitiveness.

Since its establishment in 1996, the Research Institute of Nursing Science has held nationwide academic conferences and seminars every year. The Institute has been publishing academic journals since 1996, and its journal 「Nursing & Health Issues (NHI)」 was selected as a KCI candidate journal by the National Research Foundation of Korea in 2021.

2. Management Research Institute

Phone: +82-62-530-1427 URL: cnu123.com

Chonnam National University's Management Research Institute was established in 1984 under the initial nomenclature of the Chonnam National University Industry-Academic Cooperation Group to contribute to the development of business administration and community development through academic and practical research related to the management of construction organizations.

Chonnam National University's Management Research Institute has established and operated four specialized research centers for various projects. There are management consulting centers, big data centers, management education centers, and ESG centers. Professors, researchers, and advisors with both expertise and practical skills are presenting practical and professional services at each research center.

3. Institute for Public Affairs

Phone: 82-62-530-2289 URL: <http://jnupa.jnu.ac.kr> (Community – Research Center)

The purpose of the Institute for Public Affairs is to contribute to the development of studies and practice of public administration through the study and research of these fields.

The following are the projects of the Institute for Public Affairs for the accomplishment of its purpose.

- Studying and conducting research in public administration and its practice
- Conducting paid research projects and services
- The publication of academic books and theses collections
- Hosting research announcement sessions, seminars, and lectures
- Exchange with domestic and international information on public affairs

4. Engineering Research Institute

Phone: +82-62-530-1618

Established in 1965, the Engineering Research Institute is dedicated to advancing engineering technology in Gwangju and the Jeonnam region. Utilizing eminent faculty members, researchers and cutting-edge research labs, the Institute is actively engaging in academic research as well as technical projects involving engineering examination, design, estimation, and training in the region.

5. The Innovation Center for Engineering Education

Phone: +82-62-530-1626 URL: <http://icee.jnu.ac.kr/>

The ICEE serves as an innovative institute for engineering education in general with a future-oriented focus on generating and implementing innovative ideas for education programs, systems, environments, and teaching methodologies. It is directing improvements to creative and integrated education systems, strengthening industry-university cooperation, developing Capstone Design commercialization model and introducing excellence in engineering education. In addition, the ICEE supports accredited engineering education to produce distinguished engineers who are qualified to meet the demands of international business. Its work is focused on producing creative and multi-skilled engineers who are equipped to compete in the field of global engineering education.

6. Optoelectronics Convergence Research Center

Phone: +82-62-530-0126

Optoelectronics Convergence Research Center (OCRC) was established for the successful development of new materials and devices focusing on optoelectronics convergence.

1. Purpose

- Worldwide climate change and energy problems are arising
- Responsible environmental and climate protection with energy management is an important issue
- Needs for sustainable and abundant alternative energy sources are high
- Energy conversion, stable supply of energy, next-generation light source/display devices are the core techniques for the creation of added value in the country
- A new research center is needed for the fulfillment on the source technology development on optoelectronics

2. Current condition

- Director: Professor Jin Hyeok Kim (Department of Materials Science and Engineering)
- Date of establishment: March 1, 2015

3. Research areas and features

1) Materials Development & Characterization

- New type of materials with specific function/properties
- Graphene, complex oxides and sulfides, etc
- Establish the new analysis tools and their applications

2) Photoenergy

- New type of flexible and energy conversion devices
- Supplementation for mobile accessibility
- Establish the new analysis tools and their application

3) Luminescence/Display

- New type of growth techniques for III-V materials and phosphors
- Extremely high-efficiency luminescence devices
- Establish the physical background for the new process and device platform

7. The Institute of Educational Research

Phone: +82-62-530-2326 URL: ier.jams.or.kr

The Institute of Educational Research is dedicated to enhancing the quality of education and teacher training, promoting research and development in theory, methods and technology of teaching, and improving the education of the local community.

Since its establishment in 1973, the institute has sought ways to improve communication between teaching theory and practice.

The institute is based on the theories of pedagogy, which is the foundation of subject matter education.

Raising issues related to theories in education is another role that the institute is playing. The Journal of Educational Research and New Horizons of Educational Research are published annually. For students pursuing teacher's certificates, the institute offers special lecture services.

- Research on university education: teacher education, educational contents, class assessment
- Academic conferences for regional development of education, focusing on virtual reality, career education, and future education
- Publication of The Journal of Educational Research and New Horizons of Educational Research
- Hosting Korea, China and Japan International Symposium on Educational Issues
- Edu-tech based research and practice: design and development of VR, AR educational contents
- Research on regional education

8. Center for Global Diaspora Studies

Phone: +82 - 62 - 530-2701 Homepage: <http://www.hansang.or.kr/>

Center for Global Diaspora Studies was established in 2002 to examine overseas Koreans and extend the research field through various activities. The main activities of the research center are holding domestic and international academic conferences, publishing books and articles, international cooperation with universities and institutes, training graduate students for future generations, and operating research projects.

In particular, the research center has been carrying out a research project on “Diaspora as Ethnic Dispersions and Global Communication” granted by National Research Foundation of Korea since 2010 that will continue until 2018. The objectives of this project are to analyze the characteristics of diasporas not only of overseas Koreans, overseas Japanese, and overseas Chinese, but also other diasporas in the world. Furthermore, we develop the analysis framework and develop the archives to preserve the database. Recently, with the theme of “Migration and public health in the post-COVID19 era-focusing on local health commons” the National Research Foundation of Korea is conducting a humanities and social research institute support project (September 2021 to August 2027).

9. Kumho Life Science Laboratory

Phone: +82-62-530-4780 URL: <http://kumho.chonnam.ac.kr>

The Kumho Life Science Laboratory of Chonnam National University aims to contribute to the development of life sciences of Chonnam National University by conducting research in the fields of plant life science and biotechnology.

Kumho Life and Environmental Science Laboratory was established in 1995 as a research institute affiliated with a company by the maintenance of life science development and public interest by the late Park Seong-yong, the former Chairman of the Kumho Asiana Group. In 2006, by the agreement between Kumho Asiana Group and Kumho Petrochemical Co., Ltd. and Chonnam National University, this institute made a new start as “Chonnam National University Kumho Life Science Laboratory”. After relocating to Chonnam University, the research members of this laboratory were rebuilt to conduct research in the fields of life science and biotechnology focused on plants. In the meantime, this Laboratory makes a great contribution to the development of plant life science in Korea by performing intensive efforts in research in the field of plants.

10. AgriBio Institute of Climate Change Management

Phone: +82-62-530-2181

The goal of the AgriBio Institute of Climate Change Management is to contribute to the development of agriculture and sustainable environments by conducting various research projects and studies on agriculture, forestry and landscape, and ecosystems. In particular, the institute aims to play a leading role in developing new ideas and technologies to solve regional and international problems related to climate change in the

Honam district and Northeast Asia.

Experts from diverse research areas, such as crop production and environmental management, forestry and landscape, and natural disaster and ecology, are participating in the climate change-related research and education.

11. Research Institute for Basic Sciences

Phone: +82-62-530-3480

The Research Institute for Basic Sciences was established to enhance basic sciences by conducting research on the qualitative improvement of basic sciences. To this end, the Institute carries out the following activities:

- Conducting world-class research activities in each field thanks to basic science financial support from the Ministry of Education and Human Resources.
- Holding domestic and international academic conferences and discussion sessions on basic science issues.
- Conducting research requested by external parties, and joint studies between industry and the University

The Institute was established as a CNU-attached Applied Physics Institute in 1967, and changed its system and name to the Science and Chemistry Institute in 1970. In 1983, the CNU-attached Research Institute for Basic Sciences was born by incorporating the Marine, Science/Chemistry and Chemistry Institutes. It was designated as a central institute in Gwangju and the Jeonnam region in 1994, and is now actively working on research projects in Hydraulics, Physics, Chemistry, Biology/Environment and the global environment.

12. Institute of Aging Science

Phone: +82-62-220-6710 URL: aiagingscience.com

The Advanced Institute of Aging Science of Chonnam National University was established in April 2017 to lead the aging science and technologies through multidisciplinary convergence researches for active and smart healthy aging in the aging society. The research institute consists of an anti-aging/aging hormone research unit, a clinical aging research unit, an ICT healthcare research unit, and a management support unit. Professors and researchers from the College of Medicine, College of Engineering, College of Engineering Sciences, College of Natural Sciences, College of Nursing, and College of Human Ecology have been participating in multi-disciplinary researches.

In order to solve the problem of the aged society, we aim to lead the future aging science technologies through clinical and basic researches such as the Korean Centenarian cohort study, Artificial Intelligence (AI) in healthcare, ICT health convergence research, anti-aging and aging hormone research, and training programs for specialists in the field of age-friendly and wellness industries.

■ Field of Research

- Anti-aging and Aging Hormones
- Korean Centenarian Cohort Study
- Age-Friendly Healthcare Devices

- ICT Health Convergence
- AI in Healthcare

13. Institute of Agricultural Science and Technology

Phone: +82-62-530-2029 URL: <http://asat.jnu.ac.kr/>

The Institute of Agricultural Science and Technology's goal is to contribute to the development of agriculture by conducting various research projects and studies to develop agricultural technology and resources, and look for ways to increase profitability.

The Institute was originally launched as the College of Agriculture, Farm and Fishing Village Development Institute back in 1963, which changed its name to the Institute of Agricultural Science and Technology in 1991. It now performs studies on agricultural and science technology, agro-economy and agro-administration to maximize the income generated by the agricultural and fishing community. Currently the Institute has eight research departments, carrying out vigorous research activities.

14. Multi-cultural Society Center

Phone: +82-62-530-5132

The Center was established with the mission to seek proper paradigms for a multi-cultural society and to build a healthy multi-cultural community through education, support, and research activities. The Center is composed of a research, education, support and cooperation department.

The research department conducts research to re-establish traditional studies of humanities and social sciences with further accepting paradigms towards to multiculturalism.

The education department develops multi-cultural learning models and expands multi-cultural education (which focus on immigrants only) for the education of local Korean residents.

The support department strengthens the connections between immigrants and local residents, guides immigrants to create a proper identity, and resolves conflicts between immigrants and local residents. To support immigrants and their families more effectively, the department is running counseling programs for multi-cultural families. The cooperation department builds networks with related organizations to cooperate cooperation and joint research systems.

15. Dental 4D Research Institute

Tel: +82-62-530-5850, 5656

The Dental 4D Research Institute was established in 2012, for improvement of national health care services and welfare through accomplishments in digital-based research, education, publication, and developments about convergence and application in the field of dentistry. The Institute reflects requirements in the current era of computerization and leads the digitalization in dentistry.

The Dental 4D Research Institute has set its mission on global research and production of new industries

and pioneering digitalization in dentistry. The Institute has visions about convergence of digital technology with medical science related to dental clinics. Annual symposiums and exceptional seminars are held monthly.

The Dental 4D Research Institute categorized the Department of Digital Image, Department of Advanced Materials Development, and Department of Educational Publication, and also carries out efficient missions.

16. Veterinary Medicine Research Institute

Phone: +82-62-530-2805 URL: <http://anis2med.jnu.ac.kr/>

The Veterinary Medicine Research Institute was established in 1997 to conduct basic and applied research that can contribute to development in the field of veterinary medicine. It tries to improve the productivity of local hog raising and stock breeding, and to enrich the quality of life of the general public. To this end, it promotes the local industry utilizing livestock, and conducts research requested by external or national organizations on pets, companion animals, special, wild animals, and animals that need preserving such as Korea's Jindo dog. The Institute strives to seek practical ways to cure diseases and prevent epidemics, a main concern in related industries and livestock-breeding farms. It conducts various academic activities including holding seminars and publishing journals.

17. Institute for East Asian Studies

Phone: +82-61-659-7580 URL: <http://www.east-asia.re.kr>

Established in 2003, the Institute for East Asian Studies conducts academic research on issues related to the Korean Peninsula and the East Asian region.

The Institute, composed of a Director, and Divisions of Planning, Research, and Education, is engaged in the following activities:

- Research on East Asian countries
- Research on South and North Korea and unification of the two Koreas
- Academic symposiums, seminars, and lectures
- Publication of research papers
- Cooperation and exchange with other research institutes

18. The Asian Pear Research Institute

Phone: +82-62-530-2106 URL: <http://www.kpear.kr/>

A. Introduction

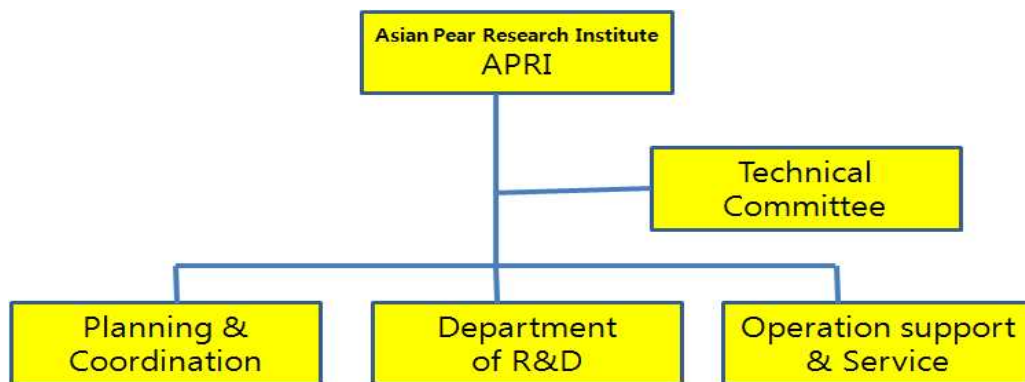
The Asian Pear Research Institute (APRI) strivers to research this fruit thoroughly with a special focus in developing the local pear industry through advanced techniques while balancing yield and sustainability.

B. Related Research Fields

- Development of Agricultural Field Application Model of digital Transformation Technology -

- Development of production stabilization technology for responses to natural hazards
- Development of quality stabilization technology through prediction of harvest period in fruit growth model using AI technology
- Development of production information-based supply stabilization technology through analysis of big data information generated by APC
- Development of pear consumption stabilization technology using edible coating technology
- Development of environmental stabilization technology by developing high value-added technology of pear waste resources
- Establishment of a living lab for on-site utilization of research results

C. Organization Chart



19. Robot Research Initiative

Phone: +82-62-530-0268

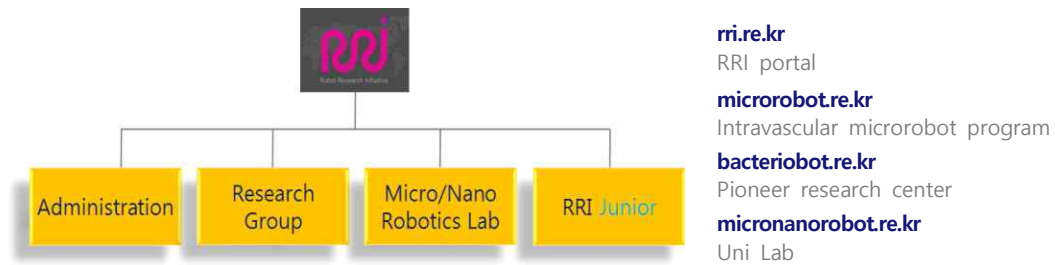
The Robot Research Initiative aims to represent the Honam area as well as Korea, and to become one of the top 5 robot centers in the world.

[Missions]

- Develop national robot projects (research and development/building foundation/develop human resources)
- Conduct large scale projects for government/local government/corporations
- Specialize in robots and become the center of excellence

[Current Conditions]

- Director: Professor Jong-oh Park (Department of Mechanical Systems Engineering)
- Date of establishment: March 31, 2008
- Organization chart



- Administrative office, Nano Robotics Lab: College of Engineering 1
- Bacterobot, service/medical robotics Lab: University-industry Collaboration Center 3

[Areas of research]

Micro/Nano Robotics, Medical Robotics, Intelligent Robotics, Space Robotics

[History of the Center]

Date	Content
March 31, 2008	Established as an affiliated research center
June 4, 2008	Chosen as a leading research center (CNU-XRC)
June 13, 2008	Signed an MOU with KIST Europe (Germany)
July 18, 2008	Held opening ceremonies for CNU-XRC
October 15, 2008	Hosted ISR 2008 conference
October 16, 2008	Participated in 2008 Robot World
October 20, 2008	Signed MOU with Scuola Superiore Sant`Anna (Italy)
October 21, 2008	Signed MOU with Carnegie Mellon University (USA)
January 29, 2010	Signed MOU with FUKUDA Lab (Japan)
May 13, 2010	Presented world's first microbot for blood vessel surgery
June 3, 2010	Held opening ceremonies for Bacte-robot Fusion Research Organization
July 20, 2010	Held opening ceremonies for Space Robotics Research
October 28, 2010	Participated in 2010 Robot World
November 25, 2010	Participated in Robot Expo
February 17, 2011	Hosted 1st International Space Robotics Symposium

20. Culture Technology Institute

Tel: +82-62-530-0360 URL: <http://ct.jnu.ac.kr>

In the 21st century, the Cultural Industry Institute receives a lot of attention as one of the highest value-added industries. Therefore, Culture Technology, as a result of supporting this industry, is being globally developed in advanced countries due to the importance of the technology. In Korea, the region of Gwang-ju city and Jeollanamdo-do is well known for maintaining the value of cultural items and their original forms. As a result, the Culture Technology Institute is more critical than any industrial things in this area.

This Institute was established to develop core technologies of the culture industry by combining advanced

sensors, imaging, and interface technology in the IT field, as well as design, human sensibility, and cultural properties in various fields. The main purpose of the institute is to contribute to the promotion of the national cultural contents industry by developing new technology which can be applied to future high-tech cultural industry through interdisciplinary fusion of engineering, humanities, sociology, culture, and art research. This institute conducts the various research activities as follows:

- Recovering traditional cultural original form and development of digital archiving technology
 - Excavation of tangible and intangible cultural original form related to traditional culture
 - High-level technology for digital archiving
 - Digital technology of converting cultural original form to digital contents
- Development of culture technology based on high-level technology
 - High-tech contents and expression technology with combination of image processing, signal processing, sensor engineering, and software programming technology
 - Intelligent interface technology for mobile and network games
 - Contents utilizing technology using the intelligent search function of web linkage
 - Contents utilization technology using the SNS and the cloud computing system
 - Production of large-scale play system by combination of gesture recognition, pattern recognition, and animation technology
 - Exhibition and education system using the tabletop display
- Supporting cultural content planning, creation, and marketing
 - Supporting expert groups for cultural content planning, creation, and marketing
 - Contract and implementation of business planning related to cultural events supporting various content creation and commercialization activities based on cultural technology
- Developing human training and commercialization technology related to cultural industry
 - Supporting cooperation-network of internal graduated researcher to cultural industry
 - Proposing national projects related to cultural industry
 - Holding seminars on culture technology
 - Maintaining industry-university collaboration for developing new cultural items
- Development of cultural industry technology with interdisciplinary co-work of humanities, sociology, culture art, design, and engineering
 - Supporting the cooperating system with culture technology institute, which will be established in the near future
 - Finding new research areas with interdisciplinary co-work
 - Developing new application technology using culture technology

21. Cultural Heritage Research Institute

Phone: +82-62-530-1336

The Cultural Heritage Research Institute is established under the R & DB Foundation of CNU to reinvent the value of cultural heritage based on the interdisciplinary program of cultural heritage in order to preserve the varieties of culture, to find sustainable values through the survey, conduct further research, and promote education of the cultural heritage. Furthermore, the Research Institute has increased its activities at the University and with Industry and Research Institutes to help revitalize the cultural industries. This institute conducts the various research activities as follows:

1. Conducting academic research for domestic and international cultural heritages
2. Collecting, recording, and preserving of research data of domestic and international cultural heritages
3. Publishing academic journals and research results
4. Holding academic conferences
5. Developing contents using cultural heritage and servicing academic information
6. Developing an educational program for training professionals about cultural heritage
7. Networking with other research institutes, public institution, and related organization

22. Cultural Convergence Research Institute

Phone: +82-62-530-4087

The Cultural Convergence Research Institute was founded to contribute to the development of national and regional cultures and related industries through convergence research, creative cultural contents, and related technology development. It was established for the purpose of establishing the identity of local culture and realizing globalization by systematic and long-term comprehensive research on urban and regional development strategies. In addition, it has striven to enhance its status as a national flagship university by conducting world-class research and developing cultural contents. The institute is conducting various research activities as follows.

- Convergence culture research combining culture, tourism, and media
- Research on urban and regional development models through culture
- Research on creative cultural contents based on imagination and fostering talent
- R&D project for industry-university-academia cooperation along with consultation and seminar events
- Operation of training programs for professionals in the field of cultural convergence
- Vitalization of domestic and international academic and cultural exchanges

23. Bio-energy Research Center

Phone: +82-62-530-0266 URL: <http://www.bri.or.kr/>

The Bio-energy research center has been established for the purpose of research and development of sustainable and environmentally-friendly cellulosic bioenergy production. Research activities of the Bio-energy research center span a range of biological and chemical disciplines, bringing together technical and scientific expertise and instrumentation from chemistry, molecular biology, and plant science and

wood sciences. The collaborative efforts are proving successful in achieving rapid advances in technologies for maximizing biofuel production from lignocellulosic biomass.

The research center is planning to become a global research center by acquiring fundamental technologies through active research collaboration with domestic and foreign research centers and companies.

- Chemistry Process Research Division: Specializes in the development of biomaterial and research on chemical procedures
- Biotechnology Research Division: Specializes in the development of new biotechnology by utilizing advanced biotechnology
- Protein Research Division: Specializes in research on enzyme gene cloning and genetic engineering techniques
- Plant Tissue Culture Research Division
- Commercialization Research Division: Specializes in the conveyance of developed technologies to the industry
- Administration: Overall operations and international cooperation

24. Biohousing Research Institute

Tel. +82-62-530-1914, Web: <http://www.biohousing.kr>

The biohousing research institute aims to develop and commercialize core technologies on biohousing for the low-carbon green growth.

Role of biohousing research institute

- Operation of biohousing research facilities (Structural lab and unit lab)
- Research on biohousing technology
- Cooperation and collaboration with other industries, governments, and academies on research and policy
- Other task relevant to the purpose of the institute

The biohousing research institute is operating the biohousing research facilities (structural lab and unit lab) that were established through the regional base research institute fostering program funded by the Ministry of Education. Based on the equipment built in the facility, structural performance tests and material tests of concrete and related products are carried out. Through this, research tasks and related projects are carried out.

25. Institute for Legal Studies

Phone: +82-62-530-2292 URL: <https://cnuils.org>

The Institute for Legal Studies (ILS) was established in February 2009. ILS was derived from the Institute of Law and Public Administration. The present ILS is enlisted under the Law School and consists of several centers: the Center for Public Interest and Human Rights Law, the Center for East Asian Law, the Center for Health & Medical Law, the Center for Intellectual Property Law, the Center for Trust Industry Law, the Center for Uniform of Private Law, the Center for Information Law Center, the Center

for Criminal Justice Law, the Center for Law & Literature, the Center for Consumer law.

The subjects we touch upon are not only domestic law but also foreign law. Moreover, Chonnam Law Review, which is run by the institute, is famous as a journal of law.

ILS carries out the following activities:

- Holding research seminars and academic conferences.
- Publishing Chonnam Law Review and special thesis collections
- Conducting research and studies by external request
- Cooperating and forming exchanges with academic institutes at home and abroad
- Performing activities for law school research

26. Research Institute for North Korean Agriculture

Phone: +82-62-530-2177

The North Korean Agricultural Research Institute pioneers customized agricultural cooperation projects that enhance the effectiveness and sustainability of agricultural development cooperation projects in North Korea, and researches related effective measures.

The mission of the research institute is to develop customized technologies that can lead North Korea's agricultural development cooperation projects and to foster experts in North Korea for potential reunification.

The major research areas are as follows.

1. Promote North Korea's major crop production and develop pest control technology based on environmentally-friendly agriculture
2. Development of on-site practical technology for producing customized crops in North Korea
3. The restoration of North Korea's devastated forests and herb cultivation technology development
4. Nurturing North Korean agricultural specialists to promote agricultural exchange cooperation between the two Koreas.
5. Providing effective and sustainable customized agricultural cooperation models

27. Institute of Social Sciences

Phone: +82-62-530-2700 URL: <http://jnuiss.jnu.ac.kr/>

The Research Institute for Social Science at Chonnam National University is a specialized institution that continuously conducts research in order to support theoretical foundations for social science. The institute was founded in 1975 and has a meaningful history of over 40 years. It is composed of various departments related to the humanities and social sciences, including the Department of Political Science and Diplomacy, the Department of Sociology, the Department of Psychology, the Department of Geography, the Department of Cultural Anthropology and Archaeology, the Department of Journalism and Broadcasting, the Department of Literature and Information, and the Department of Public Administration. The goal of the Institute is to bring out the academic achievements and discussion of the College of Social Sciences. The purpose of the Institution is to conduct theoretical research and lay the foundation for social sciences

with pursuing interdisciplinary cooperation through various approaches required by modern social sciences. Furthermore, it is to seek social science solutions to contemporary social problems.

28. Research Institute for Human Ecology

Phone: +82-62-530-1315 URL: <http://rihe.jnu.ac.kr/>

Human ecology seeking the value and quality of individuals and families through the improvement of living conditions is becoming a more significant field of study in the modern society of globalization, informatization, and industrialization. Since it was established in 1991, the Research Institute for Human Ecology has functioned as a comprehensive research center for humanities, social sciences, and natural sciences through international cooperation and collaborative work with Korean organizations.

The Research Institute for Human Ecology annually publishes the Journal of Human Ecology, and hosts academic conferences at least 6 times a year. Also, it has been conducting comprehensive research projects to meet human desires for a quality life, changes in society that demand industrialization of households, and welfare policies of Korea. To name a few, the Research Institute has completed the T-gate Product Information Project, the Aging-friendly Product Test and Display Project, the Multi-cultural Family Survey, the Low-income Single Parent Family Survey, the Human Resources Development Project for Senior Industry, the Welfare Policy Moderation Project, Changes in Korean Body Type Project and Fashion Culture Product Development.

29. The Convergence Research Institute of Service Design

Phone: +82-62-530-3023 URL: <http://www.index.or.kr>

The Convergence Research Institute of Service Design is an intellectualized design convergence lab that enhances the quality of human living by discovering products and creating new services that reflect recent innovative technology (AI, Robots, IoT, Big data, AR/VR, 3D printing, etc.). Demands for design are becoming stronger in the age of the modern Fourth Industrial Revolution as a creative catalyst for convergence among industries, and design convergence is being given the spotlight as a creative problem-solving method for the resolution of social problems as a convergence value of creative innovation focused on users.

This lab is cultivating convergence competence through various collaborative processes in and out of school and it conducts research to resolve ill-defined problems through various experiments and challenges based on design-based thinking. In other words, it analyzes problems of various industrial and social parties, presents creative solutions, and attempts to create innovative service models.

Through this, it connects studies and industries of various fields, fulfills its role as a leading research center of service design convergence that initiates research on design convergence, and furthermore, it attempts to drive the existence value of design future indicators through continuous design convergence research. Main research and activity fields

- Industrial and social problem resolution of the humanities, arts, engineering, design convergence
- Service design research project performance
- Design convergence intellectualized project propulsion and performance
- The cultivation of service design convergence research professionals
- The development of service design convergence R&D systems
- The development of user-focused design convergence service platforms
- Support for the commercialization of design and ICT convergence technology

30. Equipment Diagnosis Design Engineering Research Center

Phone: +82-61-659-6937 URL: <http://sdt.jnu.ac.kr>

The Equipment Diagnosis design Engineering Research Center was established to improve human welfare by insuring a safe industrial working environment by securing the safety of industrial equipment through research on credibility evaluation, inspection, and design related to industrial equipment.

The center will contribute to the development of Chonnam National University and the local community through the release of leading research results, as well as diagnosing and developing prevention measures for problems with industrial equipment.

31. Sexual Medicine Research Center

Phone: +82-62-220-6710

This institute is dedicated to analyzing the physiology and pathology of sexual functions in both males and females through foundational and clinical research. Furthermore, we work to diagnose and prevent the causes of diseases that result in sexual dysfunction. Our goal is to produce leading research findings and to collaborate with both domestic and international research entities. This not only advances our academic mission but also benefits the local community. Our initiatives include:

1. Studying the prevalence rates of diseases related to sexual disorders.
2. Investigating the causes of sexual disorders and researching preventive measures.
3. Conducting basic research into the physiology and pathology of sexual functions.
4. Creating animal models to study various sexual disorders.
5. Analyzing sexual psychology and developing treatments.
6. Exploring the central nervous systems responsible for sexual function using functional imaging study
7. Designing testing equipment for diagnosing sexual disorders.
8. Developing and commercializing treatments for sexual disorders.
9. Undertaking clinical research related to medicines that address sexual functions.
10. Collaboration with domestic and international research centers focused on sexual health.

32. The Fisheries Science Institute

Phone: +82-61-659-6741, URL: <http://jnufsi.jnu.ac.kr/>

The mission of the Fisheries Science Institute at Chonnam National University, Yeosu Campus is to provide the comprehensive education and research needed by the fisheries and marine industries and to contribute to the development of fisheries science and technology in South Korea.

The major activities of the institute.

- Developing advanced technology and basic research on fisheries and marine science.
- Conducting planned research projects to promote business in fisheries and marine industries.
- Providing professional education and training.
- Collaborative research with government organization and businesses, and international studies.
- Providing technical training and education for fisherman and business manager.
- Collecting and managing fisheries and marine science information for the advancing fisheries technology.
- Hosting conferences, symposium, and seminars, and publishing periodical articles.
- Collection and exhibition of educational material, models, and specimens.
- Fundraising and managing the commissioned research and relevant business.

33. Aquatic Animal Hospital

Phone: +82-61-659-7177

Intensive culture practices, rapid environmental changes, and increased international trade of aquatic animals are causing high chances of widespread diseases these days. In order to control the spread of aquatic animal diseases, the 'Aquatic Animal Disease Control Act' has been reinforced since December 2008 in the Republic of Korea. The Aquatic Animal Hospital of Chonnam National University has been certified as a pathogen appraisal institute in accordance with the act.

In addition, the Aquatic Animal Hospital of Chonnam National University was registered as the university's research institute and primarily focuses on the diagnosis (or detection) of fish and shellfish diseases, recommending proper control and treatment methods. The institute accepts fish and shellfish samples showing clinical signs of disease (parasites, bacteria, viruses, fungi, etc.) for diagnosis by licensed fish doctors. A nominal fee is charged for these services. Additionally, we develop diagnostic techniques, immunization boosters, and strive to build systems for producing safe fishery products. The Aquatic Animal Hospital also conducts research projects through collaboration with other research organizations and companies.

■ Services

1. Detection of pathogens in accordance with the guidelines of the Aquatic Animal Disease Control Act
2. Diagnosis of fish and shellfish diseases and recommendations for proper treatment
3. Antibiotic susceptibility testing
4. Identification of parasites, bacteria, and viruses

34. System Security Research Center

Phone: +82-62-530-3714 Homepage: <http://ssrc.jnu.ac.kr>

With the development of information and communication technology, people and people, people and things, and things and things are closely connected based on the Internet. At the same time, as cyber-attacks that threaten the security of personal information and information networks are increasing, a system for predicting and responding to cyber threats is required.

In response to these demands, the System Security Research Center conducts security research on computer network security technology and the Internet of Things devices using Artificial Intelligence algorithms. In particular, it is working with the information security industry and national security organizations to advance the Artificial Intelligence security technology.

In 2019, the center was selected as the Graduate School of Convergence Security by the Ministry of Science and ICT. The center will train security expert who specialize in the new energy industry over the next six years. Eleven companies and organizations including KEPCO, KEPCO Knowledge, Data & Network, Korea Power Exchange, AhnLab and Wins Technet will participate in the project. The center develops training courses and operates industry-academic cooperation projects with partner organizations in order to cultivate human resources in the field of energy security.

35. Asian Culture Research Center

Phone: +82-62-530-0907 URL: <http://asia.jnu.ac.kr/>

The Asian Culture Research Center was established for successful national projects and the development of the community through research on Asian culture and on central cities in Asia. The Center carries out the following projects:

- Areas of research
 - Policy making related to Asian culture
 - Developing and administering education systems related to Asian culture
 - Planning research on Asian culture in school systems
 - Collaborating with other organizations and industries related to Asian culture
 - Studying business opportunities for Asian culture
 - Other research activities
- The Research Center is composed of the Planning Department, Research Department, Education Department, Cultural Industry Department, Cultural Space Department, Cultural Art Department, and Cultural Tourism Department under the director of the Center.

36. Research Institute of Pharmaceutical Sciences

Phone: +82-62-530-2953

The Research Institute of Pharmaceutical Sciences was established to promote basic pharmaceutical

research, which is the basis for new drug development, to develop new pharmaceutical technologies, and to provide a basis for joint research by activating exchanges with pharmaceutical researchers and institutions in order to contribute to the improvement of human health. The center is focusing on the following projects to become a research institute that develops core original technologies in the field of new drug development based on joint research with domestic and foreign ‘excellent research institutes’ and companies and industry-university-research cooperation.

- Discovering new drug targets
- Drug research related to disease prevention and various diseases
- Development of bio-active materials
- Hold academic symposiums and research seminars
- Industrial technology transfer and product commercialization

37. Fishing Technology Institute

Phone: +82-61-659-7120 URL: <http://marine.chonnam.ac.kr>

Yeosu is a major fishing port, containing 30% of the fish caught in South Korea. Set nets, anchovy boat seines, and lift nets are some of the more popular fishing methods or tools in the Yeosu coastal waters.

The Fishing Technology Institute, located in Yeosu, trained human resources needed for far sea fishing during the 60’s, 70’s and 80’s together with Chonnam National University. Recently, the Institute has been focusing on developing fishing technologies for coastal fisheries, especially the Southern coast of South Korea.

Electronic engineering and machine control technologies have recently been applied to fishing gears for more productivity and sustainability in the fishing industry.

38. Institute of Fishing Villages & Aquaculture

Phone: +82-61-659-7578 URL: <http://www.ifva50.jnu.ac.kr/>

The purpose of the Chonnam National University Fishing Village Aquaculture Research Center is to contribute to the sustainable development of the fishery and marine industry by promoting the balanced development of fishing villages and carrying out the necessary R&D and human resource training projects. For this purpose, both tangible and intangible resources such as fishery products, nature, and the culture of specialized fishing villages for the 6th wave of industrialization are utilized to converge manufacturing and processing industries such as seafood production and processing, service industries such as distribution and tourism, and related fishery information and technological services. From these aforementioned fields, we will play a leading role in resolving the problems faced by fishing villages and the wider fisheries industry.

Field of research activities

- Comprehensive industrialization of fishing village resources and creation of specialized amenity environment for fishing villages

- Provision of marine environmental and spatial information, and fisheries restoration technology
- Environmental capacity management of fishing grounds and aquaculture Industry technology development
- Development of resource management models & technology through marine ecological monitoring and fisheries resource information analysis
- Development of technology for damage reduction of natural disasters and control of harmful organisms in ecosystems.
- Development of capacity enhancement program for fishing villages and specialized training in fisheries technology and aquaculture
- Consultation for government agencies and industrial bodies and the conducting of cooperative research between industry and academia, coupled with commissioned research

39. The Yeosu Area Studies Institute

Phone: +82-61-659-6236 URL: <http://www.yeosu.re.kr>

The Yeosu Area Studies Institute conducts multidisciplinary and interdisciplinary research on the culture, politics, economics, society, and environment of Yeosu. Its goal is to establish comprehensive Yeosu studies and contribute to the development of the local community.

The institute engages in various activities such as academic research on local issues, exchanges with related research institutions, organizing academic conferences, publishing academic journals, developing and operating educational programs, and more.

The institute engages in various activities such as projects that meet the researcher's goals, comprehensive and systematic academic research on local issues, regional and common cultural areas, exchanges with related research institutions, holding academic conferences, publishing academic journals, and developing and operating educational programs.

Since its establishment in 2022, the institute held (1) an inaugural symposium that examined the significance and prospects of the launch of the Yeosu Studies Institute, and (2) three Yeosu Studies forums to come up with the direction for resolving local issues through exploration of previous cases.

40. Research Center for History and Culture

Phone: +82-62-530-0788 URL: <http://cafe.daum.net/history0788>

The Research Center for History and Culture conducts comprehensive studies on Korean history, as well as Asian and Western history. It strives to build an organic and comprehensive research system with related fields of study, and to develop history education programs and content for various demands. It also attempts to contribute to the popularization of historical content and creation of a new culture. To achieve these goals, the Center carries out the following activities:

- The study of Korean, Asian, and Western History comprehensively and systematically
- The investigation of methods tying in with related fields of studies and academic exchanges
- Operating a stable research support program for future generations of scholars and researchers
- Operating various educational programs to teach history and culture in step with the popularization of history study

41. Institute of Coastal Environment Research

Phone: +82-61-659-6970 URL: <http://icer.re.kr>

After its establishment in 1992 as the Environmental Research Institute, the Institute was renamed the Coastal Environment Research Institute in March 2007. The Institute aims to develop environmental technology to overcome pending issues in the environment, improve the environment in all aspects, and to promote the development of the local community and the nation by researching region-specific environmental problems.

As an endeavor to fulfill this goal, the Institute develops environmental technology, provides education and training on environmental conservation, holds academic seminars and workshops to present research findings, collects research data and materials, publishes papers, conducts research projects commissioned to the Institute, and provides consulting. The Coastal Environment Research Institute is composed of the research divisions of Coastal Environment Management, Industrial Complex Environmental Management, Environmental Safety and Disaster Prevention, and Natural Environment Management.

The Coastal Environmental Research Institute has achieved remarkable achievements such as solving environmental problems and developing environmental technologies centered on the Gwangyang Bay area, including 20 publications of academic papers (226 articles), 109 research projects, 95 seminars and workshops, and 152 policy consultations.

42. The British/American Studies Institute

Phone: +82-62-530-3120 URL: <http://altair.chonnam.ac.kr/~eculture/>

The British/American Studies Institute was established to improve the understanding of American and British culture through various academic activities involving English-speaking nations. To this end, the Institute invites scholars at home and abroad to hold open lectures and seminars on the history, politics, society, literature, and the arts of English-speaking nations. In addition, the Institute collects books and material for the study of these areas, and holds study sessions on a regular basis to deepen understanding of these cultures.

In the future, the Institute will strengthen ties with the Korean studies institutes working in English-speaking countries. To realize these goals, it will increase academic exchanges with English Studies institutes in foreign countries to invigorate the study of American and British cultures.

43. Art Research Institute

Phone: +82-62-530-3007

The goal of the Art Research Institute is to revitalize the local art community and promote development of culture through information exchange, data collection, and public relations. Since its establishment in 1992, the Art Research Institute has conducted comprehensive research on regional art, culture of art and music, and classical Korean music. The Institute also publishes an academic journal, *Collected Papers on Art*, biennially. The detailed list of activities of the Art Research Institute is as follows:

- Publication of papers and resource books
- Promotion of regional and international art exchanges
- Study and production of pieces of art in the city
- Joint musical performances with other regions and international exchanges
- Research of the music of the Jeonnam region planning of lectures by invited guests
- Popularization and globalization of Korean music
- Research of different characteristics of Korean music in various regions

44. Space Particle Research Center

Phone: +82-62-530-3484 URL: http://168.131.177.72/g5/bbs/group.php?gr_id=cepl

Space particles invoke curiosity and provides key information to understanding the standard theory and modern physics. The discovery of neutrino vibration through the study of atmosphere neutrino and solar neutrino has made a quantum leap beyond the grand unified theory based on the standard theory. Therefore, this Center intends to conduct research on key issues of modern physics such as the characteristics of space particles, the development of space particle detectors, dark matter, and the origin of space.

The Center also aims to expand the research capacities of graduate school students and promote Chonnam National University through joint research projects with the world's best space research centers: Fermi National Accelerator Laboratory of the USA, CERN (Conseil Europeen pour la Recherche Nucleaire) of Europe, DESY (Deutsches Elektronen Synchrotron) of Germany, KEK (The High Energy Accelerator Research Organization) of Japan, and the Spaceship Center at Tokyo University.

45. Institute of Eurasian Studies and Digital Humanity

Phone: +82-62-530-2460

The purpose of the Eurasian Institute is to promote interdisciplinary research amongst different fields of study related to the culture of the European and Asian regions. The institute contributes to the academic development of Gwangju and the South Jeolla Province, and also Korea by establishing a sound research structure, cooperating with related domestic and international research institutes to study the different aspects of the cultures and societies of the two continents.

Major projects of the institute include:

- Structuring focused research on boundary and methodology
- Conducting research projects
- Digital Humanity research projects
- Publication of the Chonnam University Eurasian Studies series
- Holding seminars and forums on Eurasian Studies
- Holding domestic and international conferences
- Exchange with domestic and international research organizations and the invitation of scholars
- The research, sorting, and evaluation of data and database structuring

46. Research Institute of Medical Sciences

Phone: +82-61-379-2881 URL: <http://medicine.jnu.ac.kr/>

The Research Institute of Medical Sciences came into existence on November 21, 1979, and contributes to the development of medical sciences and the improvement of public health by studying cooperatively pressing issues.

The Center is composed of the Director, General Manager, and research departments, focusing on the following activities:

- Developing research tasks in basic and clinical medicine and offering financial support
- Hosting domestic and overseas academic symposia and delivering presentations of research results sponsored by the Institute
- Publishing journals, newsletters, and medical education materials
- Nurturing competent researchers, offering them chances to study abroad, and supporting discussion sessions
- Providing high-tech equipment for various analysis activities

47. Yi Sunshin Marine Culture Research Center

Phone: +82-61-659-6580(Director), 6583(office) URL: <http://ymcri.jnu.ac.kr/>

The Yi Sunshin Marine Culture Research Center was established in July 2007, after the 2006 merger between Chonnam National University and Yeosu University, to contribute to the distribution of marine culture and its development through comprehensive research on marine culture.

The center will comprehensively and systematically study the marine culture of the Jeolla region, East Asia and the world to transform it into a cultural and spiritual asset, utilizing it as a foundation of creating new culture.

The center will firmly establish the position of Chonnam National University as a leading school in East Asian and global marine culture research and support the success and legacy of the Expo Yeosu 2012 academically.

For the above purpose, the research center conducts comprehensive research on marine culture, collecting research data, publishing academic magazines including the Marine Culture Research, or Marine Culture Studies, holding academic conferences and exchanges in various ways including ideas and human resources with domestic and international research organizations and societies.

48. Artificial Intelligence Convergence Research Institute

Phone: +82-62-530-0430 URL: <http://aicri.jnu.ac.kr/>

The Artificial Intelligence Convergence Research Institute(AICRI) was established in January 2019, and has 17 AI expert professors from the Engineering College, Natural Science College, and Medical College, including the Director Prof. Hyung-Jeong Yang. This Institute tries to apply AI and machine learning technologies to various applications, such as medical, healthcare, finance, automobile, military, mass

production, electronic marketing, agriculture, arts, entertainment, energy, legal application, and so on, with the purpose of leading a nationwide 4th industrial revolution. In addition, this Institute focuses on the development of multi-modal AI technologies which combining visual, speech, linguistic, and emotional intelligences, education of AI convergence experts, establishing domestic as well as international cooperative networks among AI convergence experts, and hosting several leading research centers.

49. Research Institute for Humanities

Phone: +82-62-530-3119 URL: <http://ioh.jnu.ac.kr>

This Institute aims to contribute to the humanities locally and globally through interdisciplinary research and joint research on humanities. In particular, the Institute carries out the following tasks in order to review current studies of humanities and to plan ways of practicing and applying research results.

- Building up and intensifying interdisciplinary and convergence research.
- Leading future humanities after the 4th industrial revolution.
- Training humanities experts and extending the outcomes.
- Creating and fulfilling models of the popularization of humanities.

50. Institute of Humanities

Phone: +82-62-530-5218 URL: <http://jnuinmun.org>

The Institute of Humanities was founded in 2017 as a consortium of five research institutions (Research Institute for Humanities, Research Center for History and Culture, Korean Language and Literature Studies Institute, the British/American Studies Institute, Center for Philosophical Studies). Through the inter-disciplinary and multi-disciplinary collaboration, it systematically explores and develops urgent and pressing agendas and seeks to engage in open, informed and nonpartisan dialogues on historically relevant issues.

The Institute has been selected by the National Research Foundation of Korea to be included as part of the National Strategies Research in Humanities Korea (HK+). Accordingly, the Institute has initiated a 7-year research project with the agenda, “Family-Community Humanities for the Integration and Communications in the Trans-Individual Era”, funded by the National Research Foundation of Korea. During the first 3-year period (2018~2020), the Institute published various books including *The Re-signification of the Family and the Challenges of the Community*, *What is Community Studies?*, *Family Humanities: Who Am I Going To Live With?*, *Family-Community Humanities Index Research*, and *Analytical Report of Comprehensive Regional Family Satisfaction Index*. For the second 4-year period (2021~2024), the Institute will expand and deepen its research project.

In the face of the increasing disintegration of traditional communities including family and local community, and of unprecedented upsurge of individualism, the Institute focuses on diagnosing and analyzing the ground-changing transformation and tries to develop humanities discourses that have explanatory power as well as the capacity to entail ethical and political practice. Specifically, it imagines coming communities in the age of the 4th industrial revolution, investigates possibilities of new family forms that embrace

multi-cultural determinations, and tries to suggest specific family-community policies that the state can utilize to resolve various family-related social problems. It ultimately aims to propose family-community discourses in Humanities that will suggest a new way of thinking politics on the level of State and also on the level of everyday life.

The Institute, while enhancing collaborative research among multiple disciplines along with Research Institute for Human Ecology and the Big Data Center, mediates theory and practice to re-vitalize Humanities Studies. Its visions and mottos are:

- to accumulate and systematize inter-disciplinary and multi-disciplinary collaboration
- to explore agendas that are relevant to the current Korean society and develop discourses accordingly
- to nurture Humanities scholars and to disseminate research achievements
- to develop and implement Humanities programs for general public

51. Research Center for Japanese Studies

Phone: +82-62-530-3288 URL: <http://jss.jnu.ac.kr/>

The goal of the Research Center for Japanese Studies is to develop Japanese studies in Korea, to contribute to a greater understanding between Korea and Japan, and initiate cultural exchanges. It also strives to develop the local community at the same time by building a database of Japanese studies and conducting comprehensive and systematic studies on Japan in terms of language, culture, folklore, history, politics, economics, and society.

To achieve this goal, the Center plans to host domestic and international academic conferences, publish academic journals, collect research material, and perform an increasing amount of exchanges on this topic with domestic and foreign universities and academic institutes.

52. Automobile Research Center

Phone: +82-62-530-1980 URL: <http://motors.jnu.ac.kr>

The Automobile Research Center(ARC) was established in 1995, fueling the research of advanced automobile technologies, building an automobile infrastructure, and promoting collaboration between industry and academia in automobile research. ARC is carrying out the following actions as of below

- Holding International Conference on Advanced Automotive Technology(ICAT)
- Promoting collaboration with industry, academia in automobile research, research institute and regional government
- Supporting technical items for automobile related industries
- Revitalizing research in automotive technology related to industry
- Development of policy issues for specialized automotive technology
- Publishing the Journal of Machinery & Automobile Research and technical information service

53. Information Technology Research Institute

Phone: +82-61-659-7434 URL: <http://isrc.chonnam.ac.kr>

The Information Technology Research Institute was established to manage research projects in the fields of information technology and related comprehensive research toward qualitative improvement and development of information technology. The main objective of the Institute is to oversee organization and operation of research in information technology.

Among the Institute's major activities are:

- Data collection and analysis of information technology
- Research on applications of information technology, technology development, and education
- Commissioning research on applied information technology and joint research of industry and academia
- Policy research for consulting information technology
- Lectures, presentations of research findings, academic seminars
- Publication of research reports and papers

54. Information Technology Research Institute

Phone: +82-61-659-1796

The Information Technology Research Institute was established to manage research projects in the fields of information technology and related comprehensive research toward qualitative improvement and development of information technology. The main objective of the Institute is to oversee organization and operation of research in information technology.

Institute's major activities

- Data collection and analysis of information technology
- Research on applications of information technology, technology development, and education
- Commissioning research on applied information technology and joint research of industry and academia
- Policy research for consulting information technology
- Lectures, presentations of research findings, academic seminars
- Publication of research reports and papers

55. Gender Research Institute

Phone: +82-62-530-2615 URL: <https://women.jnu.ac.kr/women/index.do>

The Institute of Women's Studies aims to bring about ways to prompt gender equality, to develop potential female talent, and to improve women's social status. To achieve these goals, it has conducted studies and activities to increase the role of women in the society since its establishment in 2000.

In terms of gender-related study, the Institute holds regular academic conferences and discussion sessions, and conducts interdisciplinary joint research projects, thereby creating chances for domestic and foreign scholars to exchange information and thoughts and broadening their academic horizons. In the local community, the Institute collects data on the current situation of female rights in this region and provides programs

that can enhance the ability and possibility to work in cooperation with the Gwangju Metropolitan Government, women's rights organizations, and the Ministry of Gender Equality and Family. In addition, it also hosts leadership camps targeting CNU female students to nurture them into leaders for future generations, and an employment-enhancing program for women.

56. Institute for Religion and Culture

Phone: +82-62-530-3910 URL: <http://www.rcicnu.jnu.ac.kr/>

The Institute for Religion and Culture conducts research and studies on primitive religions, historical religions, new-emerging religions, Asian and Western religions, and the cultural phenomena accompanying the rises and falls of these religions using research methods in the colleges of humanities and social studies. Through these activities, the Institute expects to contribute to the development of these fields of study, and increase the exchanges and understanding among people, religions, and cultures.

To this end, the Institute publishes academic journals, and holds academic seminars and conferences on a regular basis. Through cooperation and exchanges with research centers at home and abroad, it pursues the evolution of studies of religion and culture.

57. Center for Regional Development

Phone: +82-62-530-1428 URL: <http://crd.chonnam.ac.kr/>

The Center for Regional Development (CRD) was founded in May 1968 as a policy research institute and based at Chonnam National University in Gwangju. It has since played a leading role as a research center for regional development in Southwestern Korea. It focuses on solving general issues of the local region through research and analysis of the local economy, society, city planning, environment, and transportation.

Through comprehensive research and analysis of the current economy, society, city planning, environment, and transportation, the Institute strives to solve related issues through the suggestion of a regional development model.

It has published its research results in the form of reports, press releases, web-site access, bulletins, and a semi-annual research journal, *Studies in Regional Development*, generating a steady series of books and reports on special topics. In step with globalization, it hosts an international academic conference in cooperation with Fudan University in China, Saga University in Japan, and Kasetsart University in Thailand.

The institute is making greater efforts along with businesses and public organizations to nurture development in Gwangju and the Jeonnam region. It aims to become a central institute linking industry and academia in this region.

58. Research Institute for Creativity Education

Phone: +82-62-530-3905

This research institute was established in 2019 to take a leading role in researching and spreading science creativity, fostering the competent truth-seekers in the field and serving the local community. The institute aims to actively respond to the diverse needs of the local community and the university

by researching, developing, and implementing talent development programs based on the experience and expertise of the Science Education Institute for the Gifted.

Accordingly, research and development of programs for STEM+I Class (2020~present), Creative Design Camp (2020-2021), and Science and Engineering Career Camp for talented (2021) are being carried out, contributing to nurturing local communities and creative talents.

- Development and research of creativity education/gifted education/science museum education programs
- Selection and education of students gifted in science
- Training and support in creativity education for professionals

59. Center for Philosophical Studies

Phone: +82 - 62 - 530-3291 URL: <http://sophia.jnu.ac.kr/>

The Center focuses on maximizing the efficiency of the study of philosophy by conducting systematic, professional, and comprehensive studies of Asian and Western philosophical thoughts. Also the Center has a will to strengthen and expand its educational functions by running post-doctoral support programs, developing philosophy education content and programs, offering open lectures, setting up philosophy camps for local residents. By deepening academic level of study and working for the popularization of philosophy at the same time, the Center aims to contribute acceptable norms in modern society and normal and create future cultural trends.

- Studying on Asian and Western philosophical thoughts systematically, professionally and comprehensively
- Considering of interdisciplinary approach between humanities & social sciences and natural sciences
- Running research-supporting programs for future generations
- Developing educational philosophy education content and conducting programs for a wider audience

60. Research Institute for Catalysis

Phone: +82-62-530-1769

This Institute was established in December 1977 under the presidential decree 8841 as an affiliated research center to the College of Engineering. In December 1982, it changed its name to the Catalysis Research Institute under the presidential decree 11018. Since then, the Institute has studied general technologies related to catalysis.

The Institute has contributed to the development of industry and the promotion of knowledge by conducting research, hosting conferences, and by publishing journals.

In 2007, the institute was chosen as by Priority Research Centers Program through the National Research Foundation of Korea to carry out “Clean Energy Catalyst Development Project for Next Generation” and successfully undertook three stages of project on development and process of eco-friendly catalyst for 9 years.

- Developing functional catalysis for clean energy
- Developing clean energy manufacturing process using photons
- Developing nano-based clean energy manufacturing process

Based on the research achievement obtained from Priority Research Centers Program through the National Research Foundation of Korea, we have carry out research collaborations with local governments and many companies to solve environmental issues, such as;

- Development and fabrication process of fuel oil catalyst from daily wastes
- Development of concrete pavements block with photocatalyst and evaluation of its performance for removal of nitrogen oxides
- Development of photocatalyst paint and monitoring reduction of nitrogen oxides at sites
- Development and evaluation of customized photocatalyst products requested by companies

61. Dental Science Research Institute

Phone: +82-62-530-4800 URL: <http://dsri.chonnam.ac.kr>

The Dental Science Research Institute was established in 1992, aiming to create leading, world-class research in dental sciences. The researchers of the institute are made up of professors of Chonnam National University Dental School and other personnel. They are actively conducting diverse research with funding from both the government and industry. It also contributes to the development of dental sciences by publishing a dental journal, providing continuing education programs, and holding academic meetings. Moreover, the institute awards prizes to outstanding researchers and supports its staff in many other positive, motivating ways.

62. Institute of Environmentally-Friendly Agriculture

Phone: +82-62-530-0397 URL: <http://iefa.jnu.ac.kr>

The Institute of Environmentally-Friendly Agriculture is a premier institute that develops environmentally-friendly agro-materials which can be used as effective and safe crop protectants, and educate organic farmers to use the developed products and technology for sustainable food and agricultural systems.

The Institute was established in 2011 in response to requests by Jeollanamdo and Ministry of Agriculture, Food, and Fishery and supporters to provide science-based on information to Korea's existing organic farmers and to newcomers to organic agricultural production. The institute consists of Chonnam National University Professors and Scientists, Jennam farmers, and five agricultural companies which relate to develop and commercialize materials and technology of CNU scientists. This interdisciplinary team works together to develop research related to plant pest control by environmentally-friendly means, and the invented materials and technology are transferred to industrials and are used to train organic farmers and students. The ultimate goal of the institute is to enhance the vitality of organic agriculture using the developed cost and efficiency effective means and technology in Korea.

63. Institute of French Cultural & Regional Studies

Phone : +82 (062) 530-3190

The purpose of the institute is to promote multi-disciplinary and scholarly research and education about Francophone countries including France, their cultures, language, politics, economies, and society. The

institute was founded by the necessity of research on French cultural and regional studies which can be a part of the sustainable growth engine of Korea in the 21st century.

The institute would like to play a major role in crossing forging links between France with Quebec, Belgium, Switzerland, and African francophone countries. To achieve this goal, we have the following major business plans.

Major projects of the institute include:

- Publication of journals
- Organizing and sponsoring academic conferences
- Published Francophone books
- Exchange with domestic and foreign institutes and organizations
- Development of a French Regional Studies education program
- Construction of a Digital archiving system

64. Student Independence Movement Institute

Phone: +82-62-530-0610

Efforts to establish the Korean independence movement in the recorded history of world independence movements are desperately needed through specialized research institutes for intellectual understanding of modern social movements in the Asian region, centering on the student movement. This research institute aims to lead detailed and in-depth research on the past and present of student independence movements in various places before and after the Gwangju Student Independence Movement, especially at home and abroad under Japanese colonial rule. In addition, it aims to contribute to the development of talent and academic development that will lead the future of the nation by revealing the situation and specificity of the student independence movement in the context of world history.

The main activities as follows:

- The development and implementation of interdisciplinary cooperative research projects for student independence and student civil rights movements
- Academic events related to student independence and national movements
- Development of historical records and cultural contents related to the student independence movement
- Academic exchanges with domestic and foreign student independence movement education and research institutes
- Collection, compilation, and publication of research materials related to the student independence movement
- Other projects deemed necessary in relation to the purpose of establishment of the research institute

65. Korea Cardiovascular Stent Research Institute

Phone: +82-61-392-6243 URL: <http://koreastent.com/>

Since its inception in April 2010, the Korea Cardiovascular Stent Research Institute has been making

ceaseless efforts to be the best in the world, in the same vein as a heart that works ceaselessly. Cardiovascular disease is the leading cause of death in the world and the cardiovascular stent tops the list of imported medical devices in Korea.

In order to meet the growing demand, our institute has developed a novel coronary stent for the first time in Korea, validated its safety and efficacy through a large number of bench and animal experiments, and published the related technologies in many domestic and international papers.

The Korea Cardiovascular Stent Research Institute will make its best endeavors to develop new technologies and product innovations and to contribute to the advancement of biotechnology by promoting domestic and international research networking as well as collaboration.

66. Korean Language and Literature Studies Institute

Phone: +82-62-530-3299 URL: <http://eomun.jnu.ac.kr>

The Korean Language and Literature Studies Institute is composed of professors and researchers from the Department of Korean Language and Literature at in the College of Humanities and the Department of Korean Education at the College of Education. Through its extensive academic researches on both Korean language and literature, the institute aims to foster human resources required by the contemporary knowledge-based society, share and spread the research results, and ultimately contribute to the development of Korean language and literature. The institute also aims to contribute to the development of Korean language education by combining education and research activities to improve Korean language skills.

The main activities are as follows:

- Operation of a comprehensive research program on Korean language and literature
- Support various academic research on Korean language and literature
- Research on Korean language and literature education and the operation of related programs
- Facilitate joint research and cooperative exchanges with other disciplines
- Operation of research support programs for the next generation in the discipline

In addition, the institute has continued to organize domestic and international academic conferences in cooperation with related academic societies and research institutes, plan and publish of research collections, including the publication of the Journal of EOMUNNONCHONG.

67. Experimental Center for Coastal & Harbor Engineering (ECCHE)

Phone +82-61-659-6957 URL: <https://www.koced.or.kr/facility/sub61>

1. Purpose

- Laboratory facilities equipped with the nation's largest coastal harbor test centers
- Marine renewable energy(offshore wind, wave power, tidal power, etc.): regarding the construction and design of facilities; also cooperation between academia and industry
- International scale workshops, seminars and graduate students and researchers in the study of high-quality human resource straining tailored industry

- International coastal harbor engineering
- Local industrial development and sustainable coastal environment

2. Research areas and features

- 1) Coastal & harbor structures, develop a disaster mitigation and disaster response
 - New types of coastal & harbor structures
 - Stability of coastal & harbor structures
 - Establish disaster reduction technologies and measures derived measures, etc.
- 2) Wave test
 - Spread of wave variants
 - Agitation within harbors
 - Wave structure interaction evaluation
 - Evaluation of hydraulic characteristics of harbor structures
 - Nearshore currents
- 3) Sediment experiments
 - Beach modification
 - Establishment of coastal erosion measures
- 4) Ocean energy
 - Tidal power
 - Wave power
 - Offshore wind farms
- 5) Fisheries experimental facility test
 - Cultural stability testing and artificial reefs

68. Smart City Institute

Phone: +82-61-659-6916, Fax: +82-61-659-6917

The Research Institute of Ocean Civil Engineering Technology aims to advance engineering technologies regarding regional development, disaster prevention, and construction safety by conducting research and education projects on issues related to the ocean civil engineering industry. Major activities of the Institute include (1) data collection and analysis for the leading technologies in the construction industry, (2) conducting research and education projects for the construction technology, (3) providing technical consultation for the revitalization of the local and national construction industry, (4) hosting of lectures, presentation of research findings, seminars, and (5) publication of research reports and papers.

69. Overseas Resource Development Research Center

Phone: +82-62-530-1720 Homepage: <http://oversee.jnu.ac.kr>

Countries of the world have already entered the never-ending competition to secure natural resources. Natural resource exporting countries in South America, Southeast Asia, and Africa are raising their prices

through resource nationalism while newly industrialized countries such as China and India are practically becoming black holes of resources. This leads to predictions that the competition among countries to win resources will become fiercer.

Korea depends on imports for 97% of its natural resources and cannot pull back anymore when it comes to securing natural resources.

With the current economic structure, which focuses on exporting manufactured products, price increases in materials are having a much greater impact on Korea than some other countries. This is why the development of overseas natural resources is important.

The center was established for the following reasons: to research and develop related technologies that enable Korea to compete with leading countries, to engage in resource exploring, and develop technology that can be commercialized through joint research with related companies. Through these courses, the center also trains graduate students and those from the industry.

70. Research Center for Healthcare Convergence Technology

Phone: +82-61-659-7360

The Research Center for Healthcare and Biomedical Engineering at Chonnam National University has been established to promote the biomedical breakthrough and public healthcare enhancement through education, research, and collaboration with Industry and Academia. We are committed to integrating multidisciplinary technologies to develop innovative biomedical technologies and further ensure national technological competitiveness in extensive biomedical research. To accomplish this, the center currently consists of three major research divisions:

- Research division for Biomaterials: The division aims to provide solid research results for the delivery of high-quality medical care for animals and humans. Research interests include biocompatible materials, health-related functional food, natural cosmetics, natural antibiotics, and intelligent drug delivery systems.
- Research division for digital healthcare-wellness: The division aims to develop cutting-edge medical/health care systems for ultimately providing a better quality of life. Research interests include Big data analytics, Data-driven medicine, Mobile healthcare, Population health management, and Smart hospitals for future personalized medicine by creating, managing, and analyzing various vital data of life information.
- Research division for medical equipment: The division aims to develop innovative diagnostic and therapeutic technologies for early diagnosis, real-time monitoring, and target-therapy in various incurable diseases in a personalized Medicare system. Research interests include in-vivo and in-vitro medical equipment, morphological/functional/molecular imaging modalities, wearable medical devices, and point-of-care systems.

71. Honam Buddhism Culture Research Center

Phone: +82-62-530-3235 URL: <https://www.kbpf.org/134938/134938/>

The Honam Buddhism Culture Research Center was established to enable experts to conduct research

and share their results with the general public.

The following are the projects being conducted by the center:

- Discovering and Organizing Buddhist Cultural Assets
- Research on Buddhism
- Lectures on Buddhism for the general public
- Holding of conferences

72. Institute of Honam Studies

Phone: +82-62-530-2710 Homepage: <http://www.homun.or.kr>

The Institute of Honam Studies was formed as a result of the merger of the former Honam Culture Research Center and the Honam Studies Research Group. The former was established in 1963 to study traditional Korean culture from a local point of view and the latter was established in 2005 for the purpose of searching through the abundant history and culture of the Jeolla region. The merger has allowed for a transformation of cultural content that successfully utilizes both centers.

Academically, the research institute has worked to uncover the issues on Korean culture that are worth discussing in an academic manner. In a practical way, it developed Korean culture to become content that can be communicated to the international population. By doing so, the Institute of Honam Studies has become a comprehensive research center, positioning itself as one of the main humanities research institutes at Chonnam National University. Along with research, the center is active in publishing its work, which includes more than 72 editions of 'The Journal of Honam Studies' Series.

The Journal of Honam Studies, an academic magazine, is published biannually. The magazine was selected as a candidate to be registered in the Korea Research Foundation's list in 2006. The center's current research on the sensibility of Honam, and in a wider perspective, of Korea under the name of Establishment of Korean Sensibility as an International Communication Code was selected by the National Research Foundation's Humanity Korea Support Project 2008.

Furthermore, the Institute of Honam Studies was selected for the 'Humanities Korea Plus (HK+) Project' in 2018, the project is being carried out under the agenda of 'Emotion-Humanities for Transversal Universality in the Age of Decentralization: Place, Medium, and Narrative.'

In 2020, the Institute of Honam Studies established a graduate school department of Honam Studies to serve as an educational institution specializing in regional studies.

2023 marks the 60th anniversary of the establishment of the Institute of Honam Studies.

The Institute of Honam Studies is seeking fundamental innovation and transformation of regional studies research methodology under the theme of "Honam Studies that encompasses the region and the world, tradition and modernity."

In addition, with the goal of "Globalization of Honam studies" for the next 60 years, we are working hard to create new theories and horizons for Honam studies based on the vast amount of data and achievements accumulated so far.

The following are the research and academic activities of the center:

- Research in traditional Korean culture focusing on the Honam Area
- Research of arts and culture policies and comparative culture
- Data gathering
- Publishing of research papers and journalistic series
- Holding announcements on research and conferences
- Concentrating research capacity
- Fortifying the ability to publish research results
- Increasing educational activities on Korean studies and the spreading of Honam culture
- Uploading gathered data into a digitized database (creation of a center homepage and installation of a Honam Area Studies repository)
- Conducting research supported by the National Research Foundation's Humanities Korea Project

73. May 18 Institute

Phone: +82-62-530-3916 URL: <http://cnu518.jnu.ac.kr/>

In order to further explore the consequences and significance of the 5.18 Democratic Movement and to contribute to the evolution of democracy and the general improvement of human rights in Korea, the May 18th Institute has continued to carry out the following activities since its establishment on December 10th 1996:

- The research of material and documents related to the 5·18 Movement
- Publishing and advertising research results, as well as presenting them to the public
- Offering information on the 5·18 Movement to foreign countries as well as to the general public in Korea
- The study and application of ideologies on democracy, human rights, and peace

Every May, the Institute hosts large-scale domestic and overseas academic conferences, publishes research & thesis collections, creates an anthology, and produces brochures on the 5·18 Movement in Gwangju. To support these activities, the Institute strives to emphasize democratic values. The Institute's journal, *Democracy and Human Rights*, issued quarterly, has been designated as one of the Korea Research Foundation's Registration Journals, giving it the status of a nationally acclaimed periodical. In the future, the Institute will operate various educational programs on democracy and human rights, and establish a database of materials pertaining to the 5·18 Movement. It seeks ways to become a democratic human rights and peace center in Asia through vigorous exchanges and cooperation with research institutes both at home and abroad.

74. Fishery Resource Mangement Research Center Based on ICT

Phone: +82-61-659-6920 URL: <http://fmrc.jnu.ac.kr/>

The purpose of this institute is to provide systematic educational services for field research and basic research for sustainable fishery resource management, for the development and education of comprehensive fishery resource management technology including technology closely related to 4th industrial revolution, and for the training of fishery resource management experts. For this purpose, the institute carries out the following projects:

- Development and operation of educational curricula and contents

- Core technology research and field application service development
- Fostering fishery experts
- Support and management of the “Professional Manpower Certification System”
- Conducting industry-university-academy-public agency cooperative projects
- Other tasks that meet the purpose of the research institute